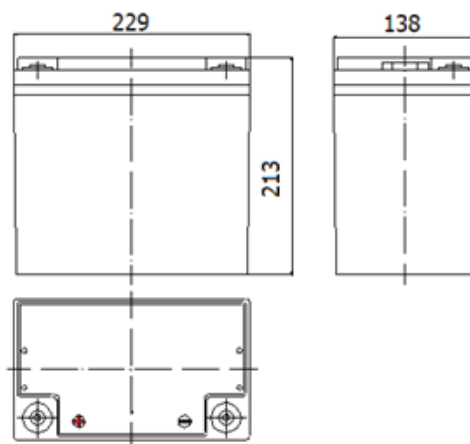


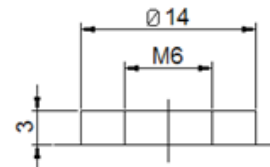
**CPG 50-12**

Dimensions



Cyclic Gel battery

Terminal



Nominal voltage	12 V DC	
Nominal Capacity (10HR, 20°C):	46 Ah	
Nominal Capacity (20HR, 20°C):	50 Ah	
Internal resistance	Approx. 12 m Ω	
Maximum charging current	11 A	
Maximum discharge current	550 A (5 sec.)	
Operating temperature range	-10°C ~ 50°C	
Float use/ cycle use	13.5 – 13.8V / 13.8 – 14.1V	
Standard terminal	Threaded Insert 6mm	
Housing material	Copper	
Dimensions	length	229 mm (±2 mm)
	width	138 mm (±2 mm)
	height	213 mm (±2 mm)
Approx. Weight	16.5 kg	
Packing	1 pcs/box	

**Typical applications:**

- Wheelchairs
- Lawnmower
- Vacuum cleaner
- Medical Equipment
- Industry

- Valve Regulated Maintenance Free
- GEL Technology
- Low self discharge
- Classified as non- spillable and Non Dangerous goods by IATA, FAA, ADR, IMDG
- Can be discharged or stored in any position without leakage
- Cannot be charged while the terminal is downward.

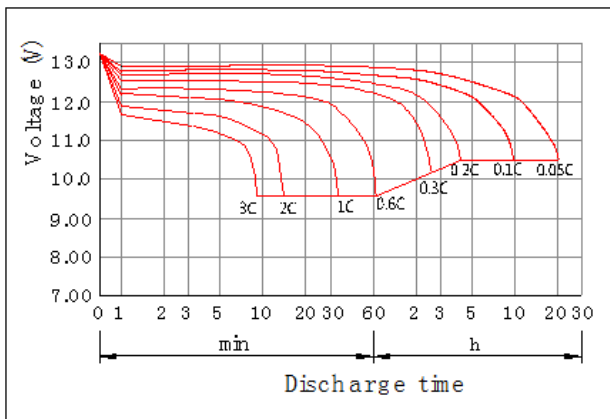
**Constant Current Discharge Characteristics (A, 25°C)**

F.V./TIME	10min	15min	30min	60min	2h	3h	4h	5h	8h	10h	20h
9.60V	78.5	69	46.8	29.6	17.1	12	9.5	8.3	5.6	4.7	2.6
9.90V	76.2	67.4	45.9	29.2	16.9	11.9	9.5	8.2	5.6	4.7	2.5
10.2V	73	64.8	44.5	28.5	16.8	11.8	9.4	8.2	5.5	4.7	2.5
10.5V	69.9	62.6	43.4	27.9	16.5	11.5	9.4	8.1	5.5	4.6	2.5
10.8V	65.9	59.4	41.8	27	16.1	11.4	9.1	7.9	5.3	4.6	2.5

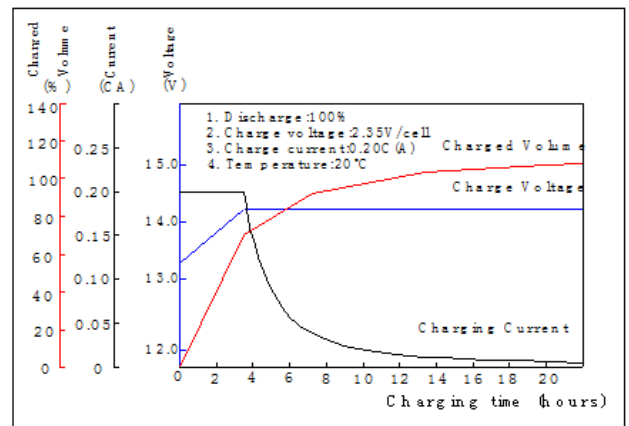
**Constant Power Discharge Characteristics (Watt, 25°C)**

F.V./TIME	10min	15min	30min	60min	2h	3h	4h	5h	8h	10h	20h
9.60V	862	770	534	342	198	142	113	98.2	67	56.2	30.7
9.90V	836	752	523	336	197	141	112	97.3	66.5	56.1	30.6
10.2V	802	724	507	328	195	140	111	97.3	66.1	55.9	30.5
10.5V	767	699	495	322	193	139	111	96.4	65.6	55.5	30.4
10.8V	724	662	476	312	188	135	107	93.6	63.7	55.2	30.2

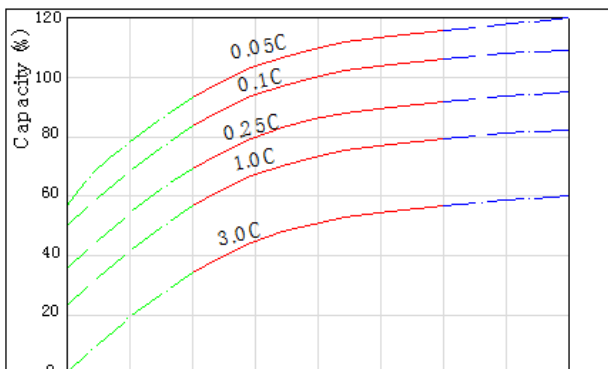
**Discharge Characteristics(25°C)**



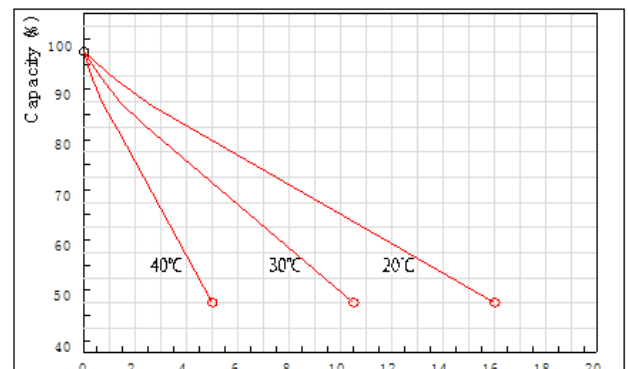
**Charging Characteristics(25°C)**



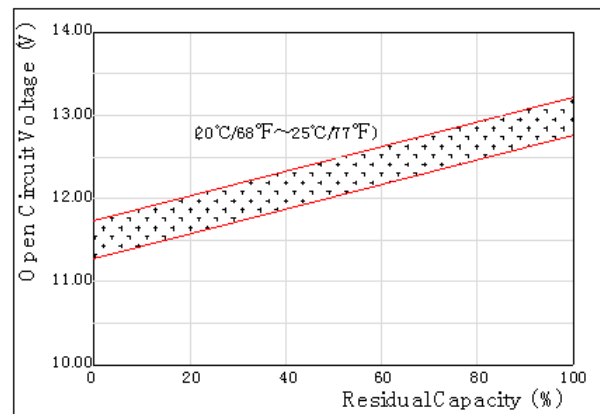
**Effect of Temperature on Capacity**



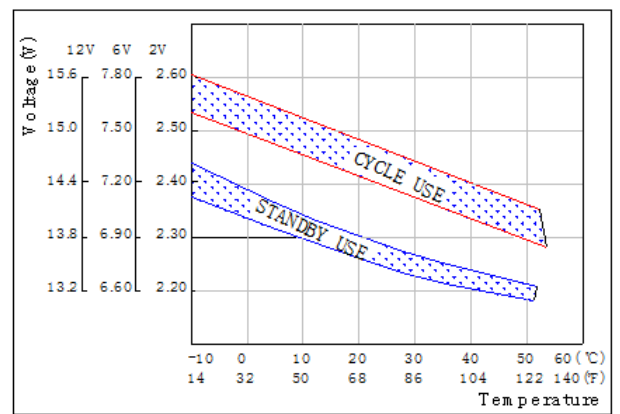
**Self-discharge Characteristics**



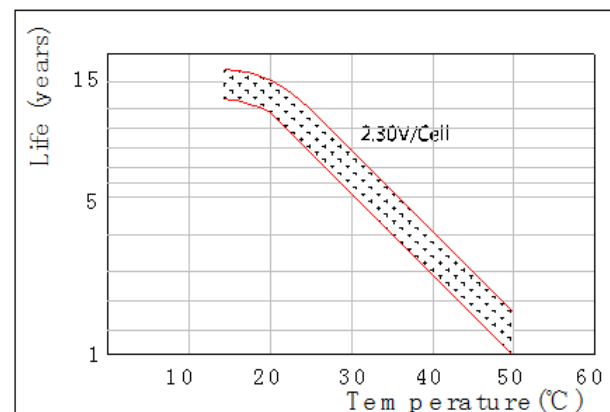
**The Relationship for Open Circuit Voltage and Residual Capacity (25°C)**



**The Relationship for Charging Voltage and Temperature**



**Floating Life on Temperature**



**Cycle Life on D.O.D(25°C)**

